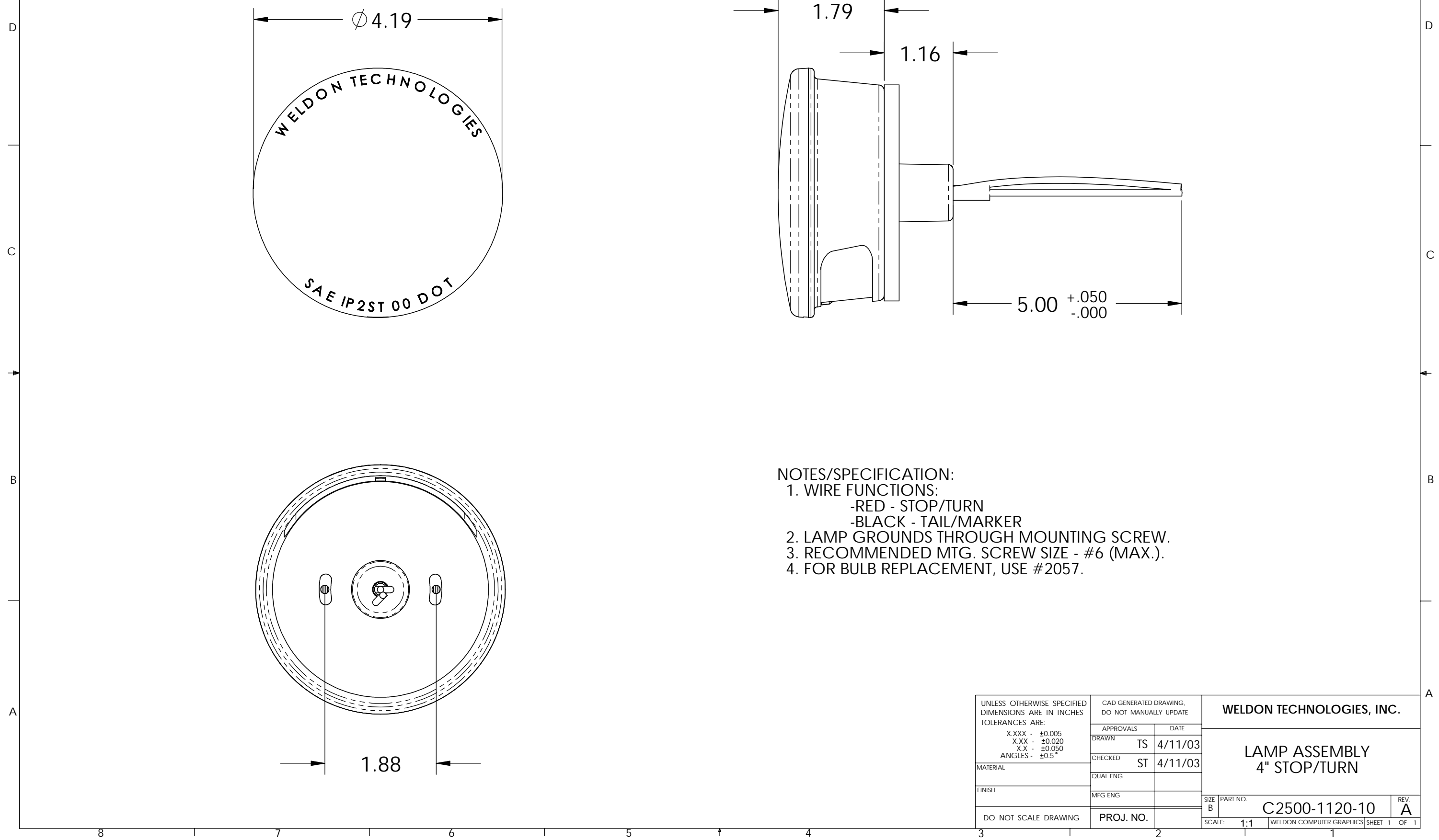


THIS DRAWING AND ALL INFORMATION CONTAINED HEREIN IS THE PROPERTY OF WELDON TECHNOLOGIES, INC. AND MAY NOT BE COPIED, REPRODUCED, OR DEVLGED TO UNAUTHORIZED PERSONS WITHOUT THE EXPRESS WRITTEN CONSENT OF WELDON TECHNOLOGIES, INC. AS IT IS BEING PROVIDED SOLELY FOR THE CONVENIENCE OF THE USER AND SHALL BE RETURNED TO WELDON TECHNOLOGIES, INC UPON REQUEST.

REVISIONS				
REV.	ECN	DESCRIPTION	DATE	BY APVD
A	R0421	DOCUMENTATION RELEASE	4/11/03	TS ST



- NOTES/SPECIFICATION:
- WIRE FUNCTIONS:
 - RED - STOP/TURN
 - BLACK - TAIL/MARKER
 - LAMP GROUNDS THROUGH MOUNTING SCREW.
 - RECOMMENDED MTG. SCREW SIZE - #6 (MAX.).
 - FOR BULB REPLACEMENT, USE #2057.

UNLESS OTHERWISE SPECIFIED DIMENSIONS ARE IN INCHES TOLERANCES ARE: X.XXX - ± 0.005 X.XX - ± 0.020 X.X - ± 0.050 ANGLES - $\pm 0.5^\circ$	CAD GENERATED DRAWING. DO NOT MANUALLY UPDATE		WELDON TECHNOLOGIES, INC.		
	APPROVALS	DATE			
	DRAWN	TS	4/11/03	LAMP ASSEMBLY 4" STOP/TURN	
	CHECKED	ST	4/11/03		
MATERIAL	QUAL ENG				
FINISH	MFG ENG		SIZE B	PART NO. C2500-1120-10	REV. A
DO NOT SCALE DRAWING	PROJ. NO.		SCALE: 1:1	WELDON COMPUTER GRAPHICS	SHEET 1 OF 1