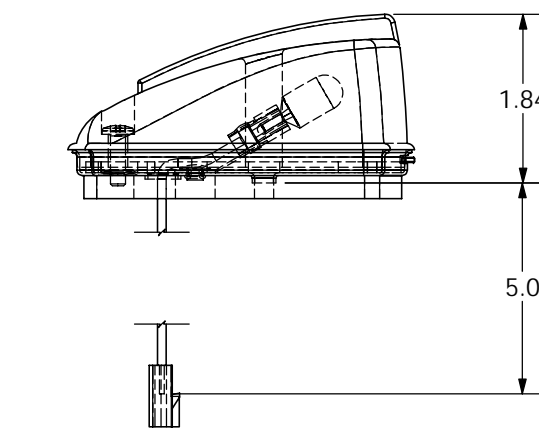
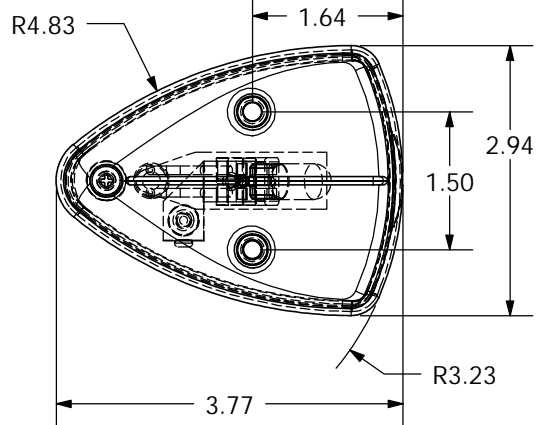
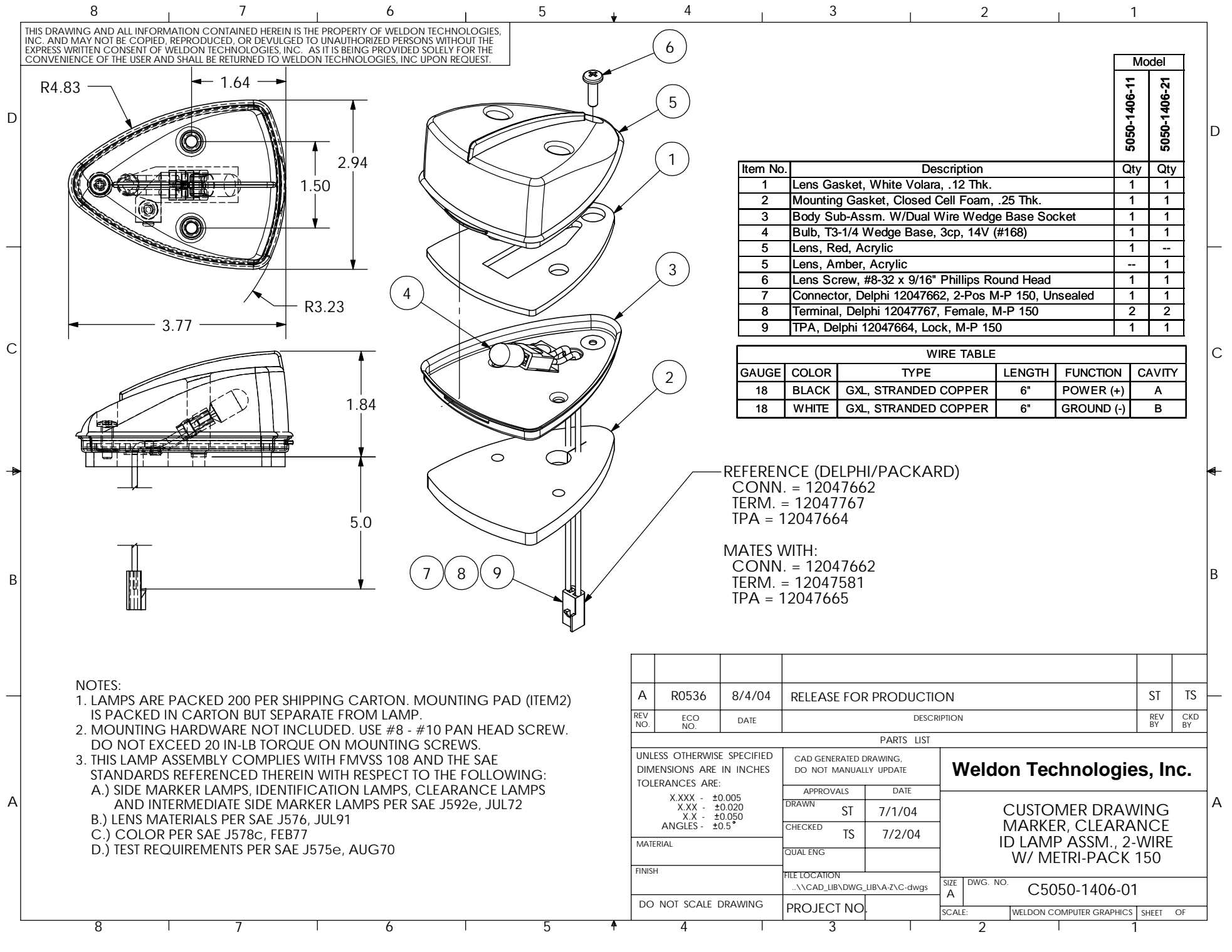


THIS DRAWING AND ALL INFORMATION CONTAINED HEREIN IS THE PROPERTY OF WELDON TECHNOLOGIES, INC. AND MAY NOT BE COPIED, REPRODUCED, OR DEVLGVED TO UNAUTHORIZED PERSONS WITHOUT THE EXPRESS WRITTEN CONSENT OF WELDON TECHNOLOGIES, INC. AS IT IS BEING PROVIDED SOLELY FOR THE CONVENIENCE OF THE USER AND SHALL BE RETURNED TO WELDON TECHNOLOGIES, INC UPON REQUEST.



Item No.	Description	Model	
		5050-1406-11	5050-1406-21
1	Lens Gasket, White Volara, .12 Thk.	1	1
2	Mounting Gasket, Closed Cell Foam, .25 Thk.	1	1
3	Body Sub-Assm. W/Dual Wire Wedge Base Socket	1	1
4	Bulb, T3-1/4 Wedge Base, 3cp, 14V (#168)	1	1
5	Lens, Red, Acrylic	1	--
5	Lens, Amber, Acrylic	--	1
6	Lens Screw, #8-32 x 9/16" Phillips Round Head	1	1
7	Connector, Delphi 12047662, 2-Pos M-P 150, Unsealed	1	1
8	Terminal, Delphi 12047767, Female, M-P 150	2	2
9	TPA, Delphi 12047664, Lock, M-P 150	1	1

WIRE TABLE					
GAUGE	COLOR	TYPE	LENGTH	FUNCTION	CAVITY
18	BLACK	GXL, STRANDED COPPER	6"	POWER (+)	A
18	WHITE	GXL, STRANDED COPPER	6"	GROUND (-)	B

REFERENCE (DELPHI/PACKARD)
 CONN. = 12047662
 TERM. = 12047767
 TPA = 12047664

MATES WITH:
 CONN. = 12047662
 TERM. = 12047581
 TPA = 12047665

- NOTES:
- LAMPS ARE PACKED 200 PER SHIPPING CARTON. MOUNTING PAD (ITEM 2) IS PACKED IN CARTON BUT SEPARATE FROM LAMP.
 - MOUNTING HARDWARE NOT INCLUDED. USE #8 - #10 PAN HEAD SCREW. DO NOT EXCEED 20 IN-LB TORQUE ON MOUNTING SCREWS.
 - THIS LAMP ASSEMBLY COMPLIES WITH FMVSS 108 AND THE SAE STANDARDS REFERENCED THEREIN WITH RESPECT TO THE FOLLOWING:
 - SIDE MARKER LAMPS, IDENTIFICATION LAMPS, CLEARANCE LAMPS AND INTERMEDIATE SIDE MARKER LAMPS PER SAE J592e, JUL72
 - LENS MATERIALS PER SAE J576, JUL91
 - COLOR PER SAE J578c, FEB77
 - TEST REQUIREMENTS PER SAE J575e, AUG70

A	R0536	8/4/04	RELEASE FOR PRODUCTION	ST	TS
REV NO.	ECO NO.	DATE	DESCRIPTION	REV BY	CKD BY
PARTS LIST					
UNLESS OTHERWISE SPECIFIED DIMENSIONS ARE IN INCHES TOLERANCES ARE:		CAD GENERATED DRAWING, DO NOT MANUALLY UPDATE		Weldon Technologies, Inc. CUSTOMER DRAWING MARKER, CLEARANCE ID LAMP ASSM., 2-WIRE W/ METRI-PACK 150	
X.XXX - ±0.005 X.XX - ±0.020 X.X - ±0.050 ANGLES - ±0.5°		APPROVALS	DATE		
MATERIAL		DRAWN	ST 7/1/04		
FINISH		CHECKED	TS 7/2/04		
DO NOT SCALE DRAWING		QUAL ENG		FILE LOCATION	SIZE A
				...\\CAD_LIB\DWG_LIB\A-Z\C-dwgs	DWG. NO. C5050-1406-01
				PROJECT NO.	SCALE: WELDON COMPUTER GRAPHICS SHEET OF