

THIS DRAWING AND ALL INFORMATION CONTAINED HEREIN IS THE PROPERTY OF WELDON TECHNOLOGIES, INC. AND MAY NOT BE COPIED, REPRODUCED, OR DEVELOPED TO UNAUTHORIZED PERSONS WITHOUT THE EXPRESS WRITTEN CONSENT OF WELDON TECHNOLOGIES, INC. AS IT IS BEING PROVIDED SOLELY FOR THE CONVENIENCE OF THE USER AND SHALL BE RETURNED TO WELDON TECHNOLOGIES, INC. UPON REQUEST.

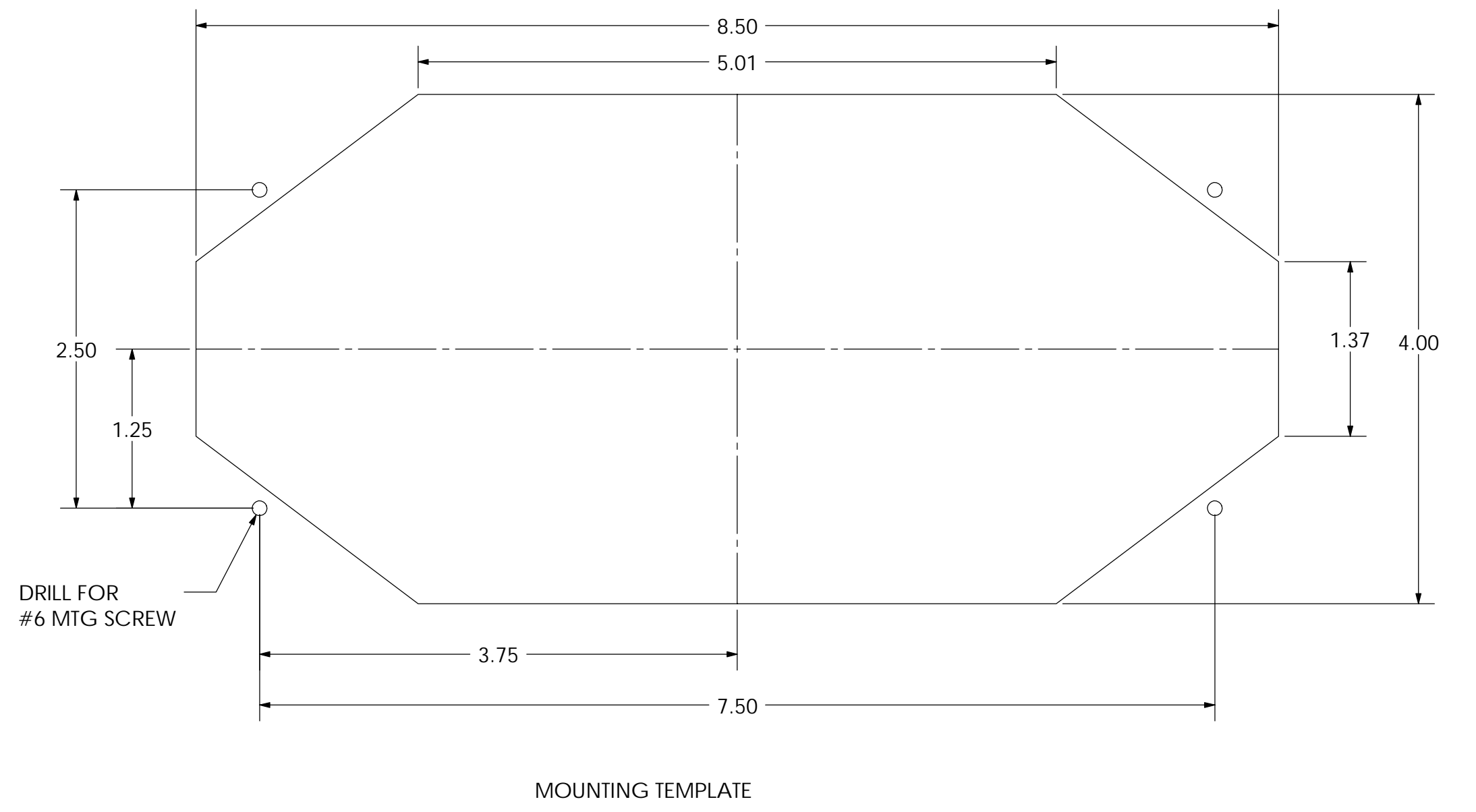
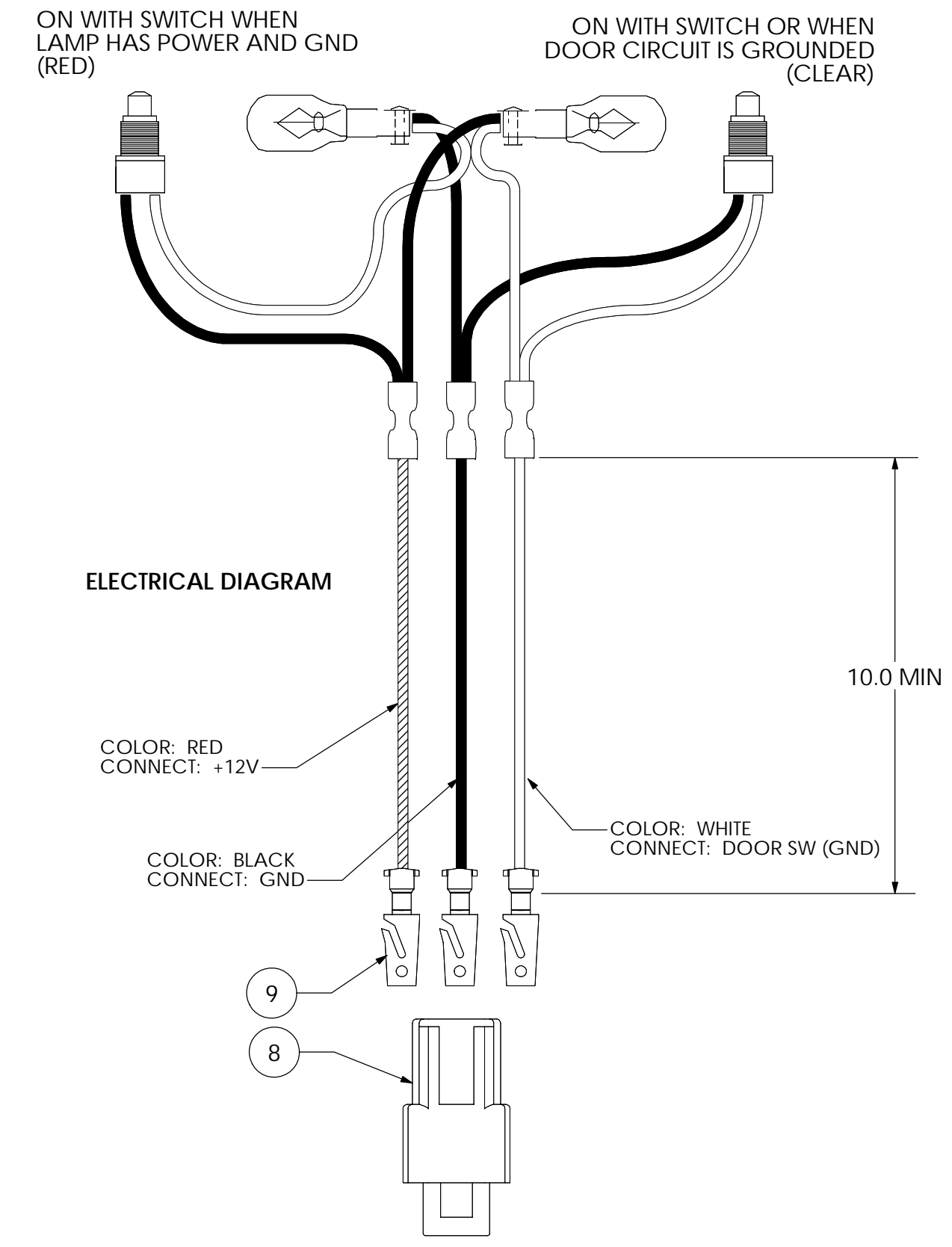
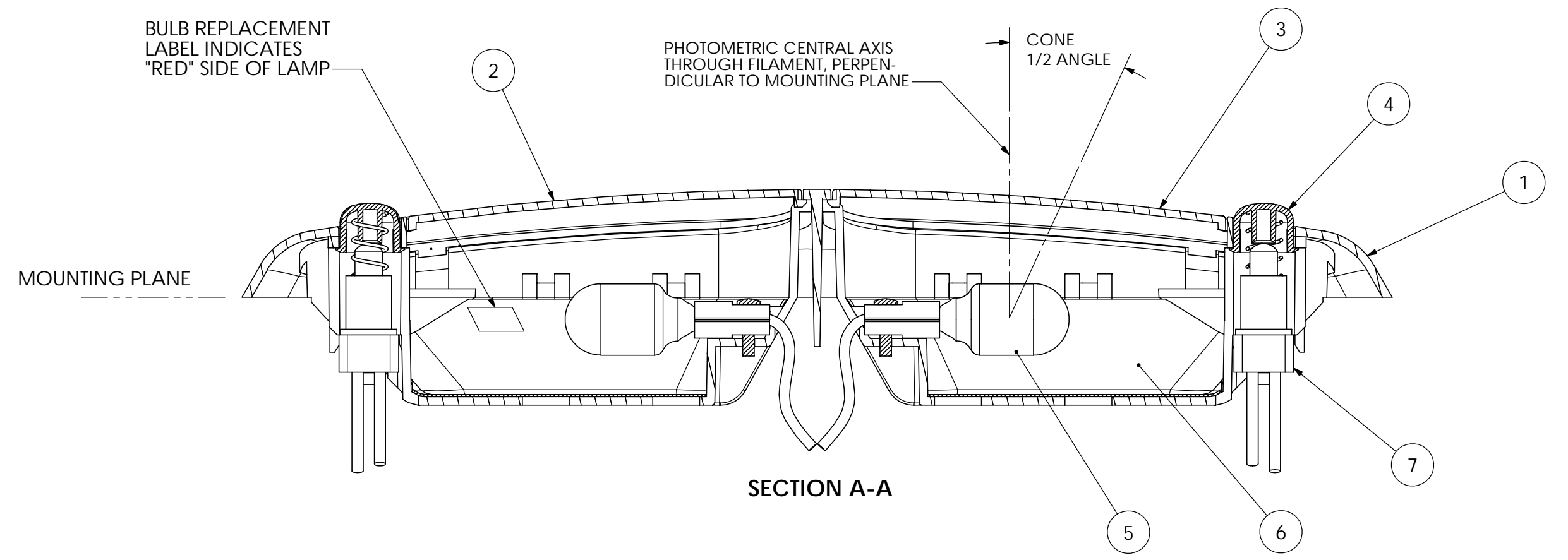
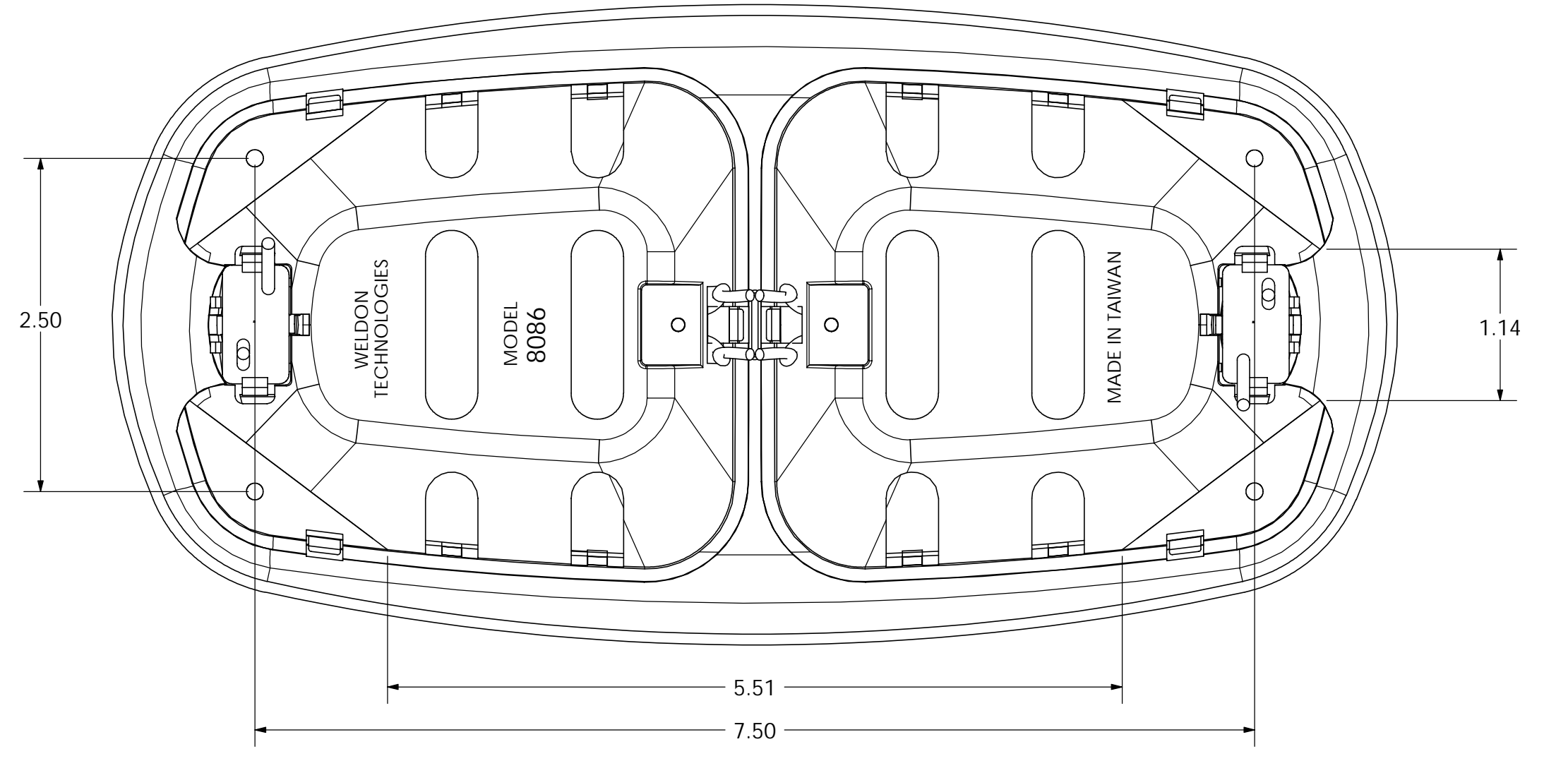
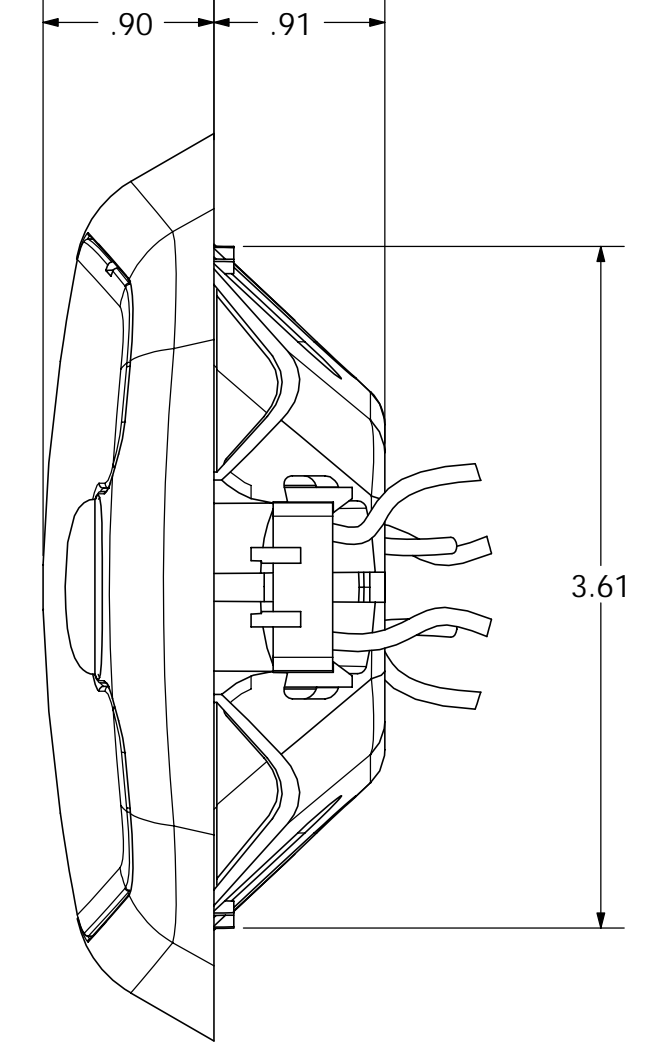
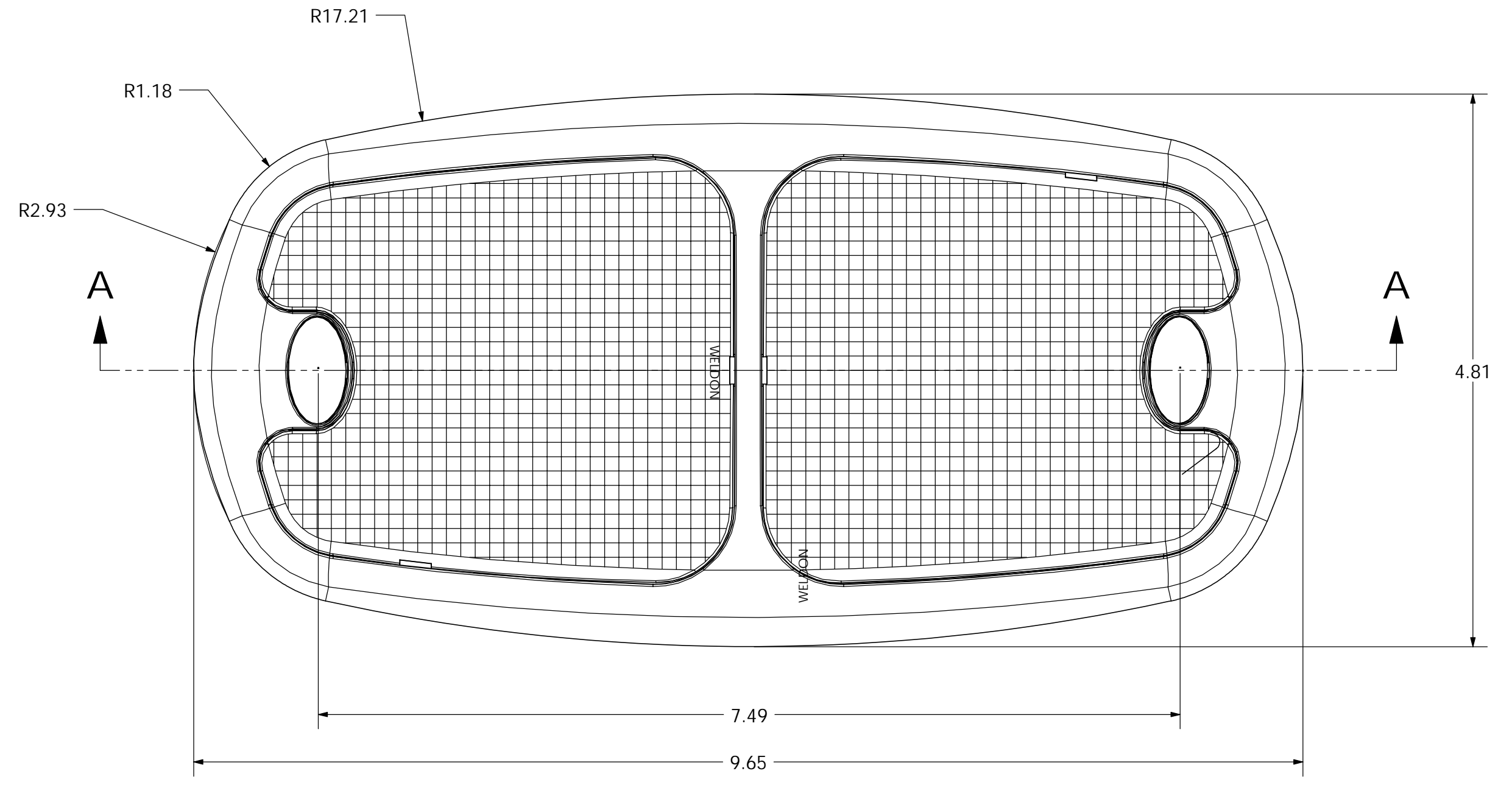
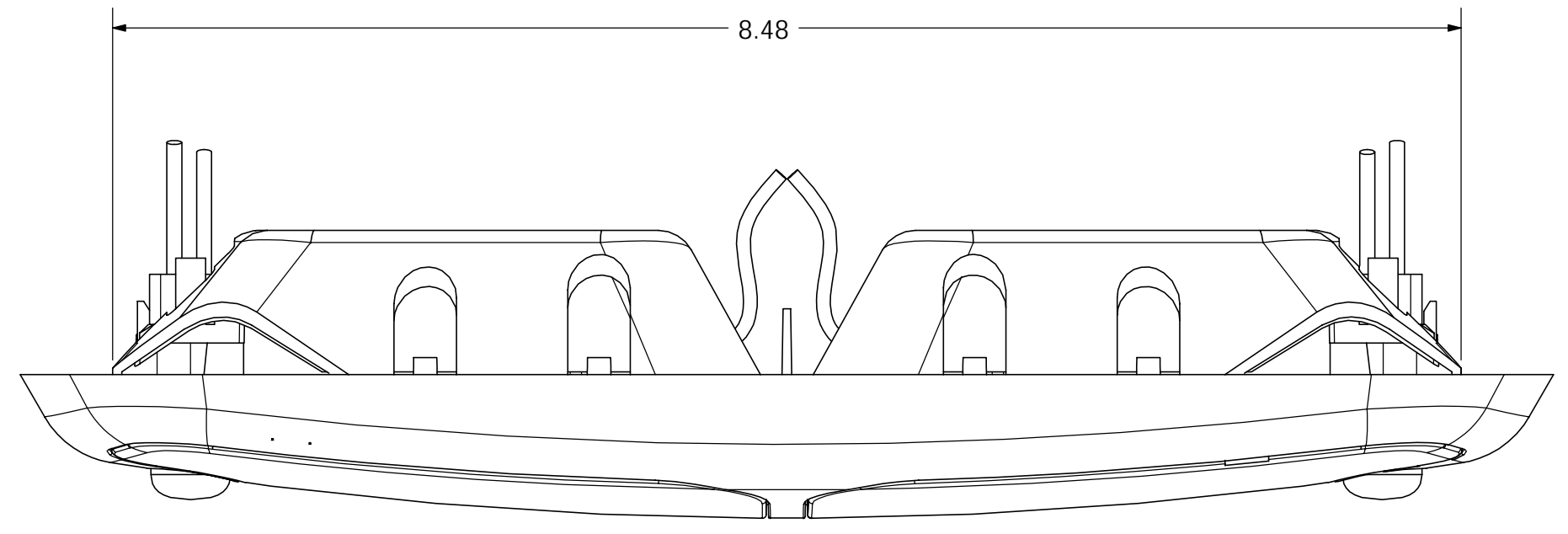
REVISIONS			
REV	DESCN	DATE	BY
A	REV177 RELEASE FOR PRODUCTION	2/16/01	ST
B	0022 CORRECTED ITEM CALLOUTS FOR CONNECTOR & TERMINALS	2/23/01	ST
C	0310 SWAPPED WHITE (DOOR SW) AND RED (+12V) POSITIONS IN CONNECTOR PER SPARTAN MOTORS REQUEST	11/26/01	ST
D	0449 SPECIFY 3M 3779IC JETMETL (OR APPV'D. EQUIV.)	8/11/03	TS

NOTES:

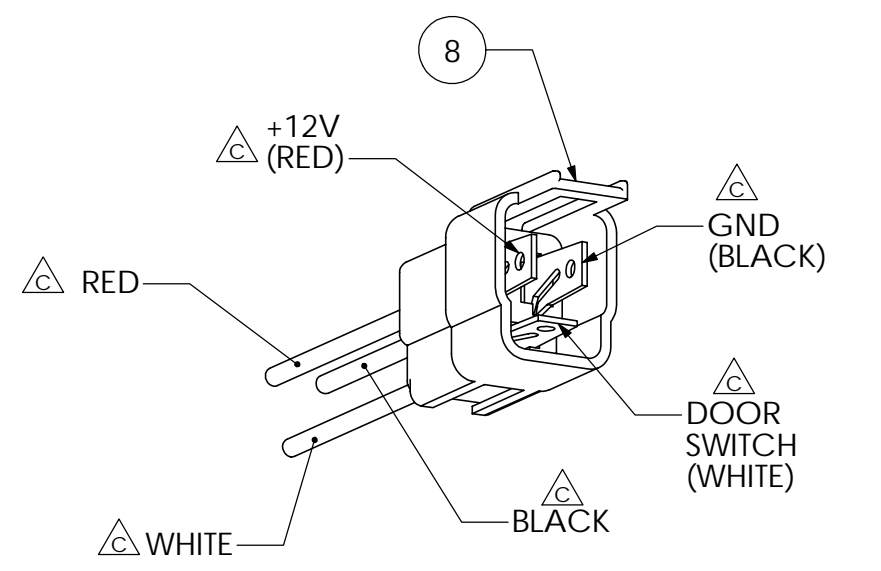
1. THE INFORMATION ON THIS DRAWING IS BEING SUPPLIED AS REFERENCE TO WELDON. CUSTOMERS WHO USE OR INTENDED TO USE THIS PRODUCT. WELDON RESERVES THE RIGHT TO CHANGE THIS PRODUCT AND THE ASSOCIATED DOCUMENTATION.
2. LENS MATERIAL IS AUTOMOTIVE GRADE OPTICAL POLYCARBONATE. LENS COLOR IS NOTED IN MATERIALS LIST.
3. HOUSING MATERIAL IS GENERAL PURPOSE POYCARBONATE.
4. LAMP IS INDIVIDUALLY POLYBAGGED AND PACKED 60 PER CARTON USING CELL DIVIDERS AND FLATBOARDS.
5. LAMP IS TO COMPLY WITH ENVIRONMENTAL AND PHOTOMETRIC REQUIREMENTS AS SPECIFIED ON THE 8089-6798-68 ENGINEERING DRAWING.

INSTALLATION:

1. LAMP IS TO MOUNTED TO A FLAT SOLID SURFACE HAVING A CUT-OUT OF DIMENSIONS SHOWN ON THE TEMPLATE BELOW.
2. MOUNT WITH #6 FASTENER. AVOID EXCESSIVE SCREW TORQUE WHICH CAN DAMAGE THE LAMP HOUSING AND/OR THE MOUNTING SURFACE.
3. VEHICLE HARNESS SHALL HAVE MATING CONNECTORS AS INDICATED BELOW.
4. WIRE THE LAMP PER THE DIAGRAM BELOW. THE RED POWER WIRE MUST BE ON A FUSED CIRCUIT OF SUFFICIENT CAPACITY TO PROTECT THE WIRING USED.
5. TYPICALLY THE RED WIRE IS CONNECTED TO A BATTERY CIRCUIT THAT IS POWERED WHEN THE VEHICLE IS RUNNING. THE BLACK WIRE IS CONNECTED TO BATTERY GROUND. THE CONNECTION OF THESE TWO WIRES ALLOWS SWITCHED OPERATION OF BOTH RED AND CLEAR LAMPS.
6. THE WHITE WIRE MAY BE CONNECTED TO A DOOR SWITCH GROUND CIRCUIT TO PROVIDE WHITE ILLUMINATION WHENEVER A DOOR IS OPENED. FOR THIS FUNCTION TO WORK ANYTIME, THE RED WIRE MUST BE CONNECTED TO A CONTINUOUS BATTERY CIRCUIT.



MATERIALS LIST			
ITEM	SERVICE P/N	DESCRIPTION	QTY
1	--	HOUSING, BLACK	1
2	0C11-1223-00	LENS, RED	1
3	0C13-1225-00	LENS, CLEAR	1
4	--	SWITCH CAP, BLACK	2
5	922	BULB, 15CP WEDGE BASE, #922	2
6	--	REFLECTOR, ALUMINIUM	2
7	--	SWITCH, ALTERNATE ACTION PUSH BUTTON	2
8	--	Connector, Packard 2984678	1
9	--	Terminal, Packard 2965429	3



VEHICLE HARNESS REQUIREMENTS:
MATING PLUG = PACKARD 2984378
MATING TERM. = PACKARD 12124513

UNLESS OTHERWISE SPECIFIED DIMENSIONS ARE IN INCHES TOLERANCES ARE: X.XXX - ±0.005 X.XX - ±0.020 X.X - ±0.050 ANGLES - ±0.1°	CAD GENERATED DRAWING. DO NOT MANUALLY UPDATE.	WELDON TECHNOLOGIES, INC.
DATE: 2/6/01	APPROVALS: ST	DOME LAMP ASSEMBLY
PROJECT: 00142	SCALE: AS SHOWN	C8086-6978-68
SHEET 1 OF 1		