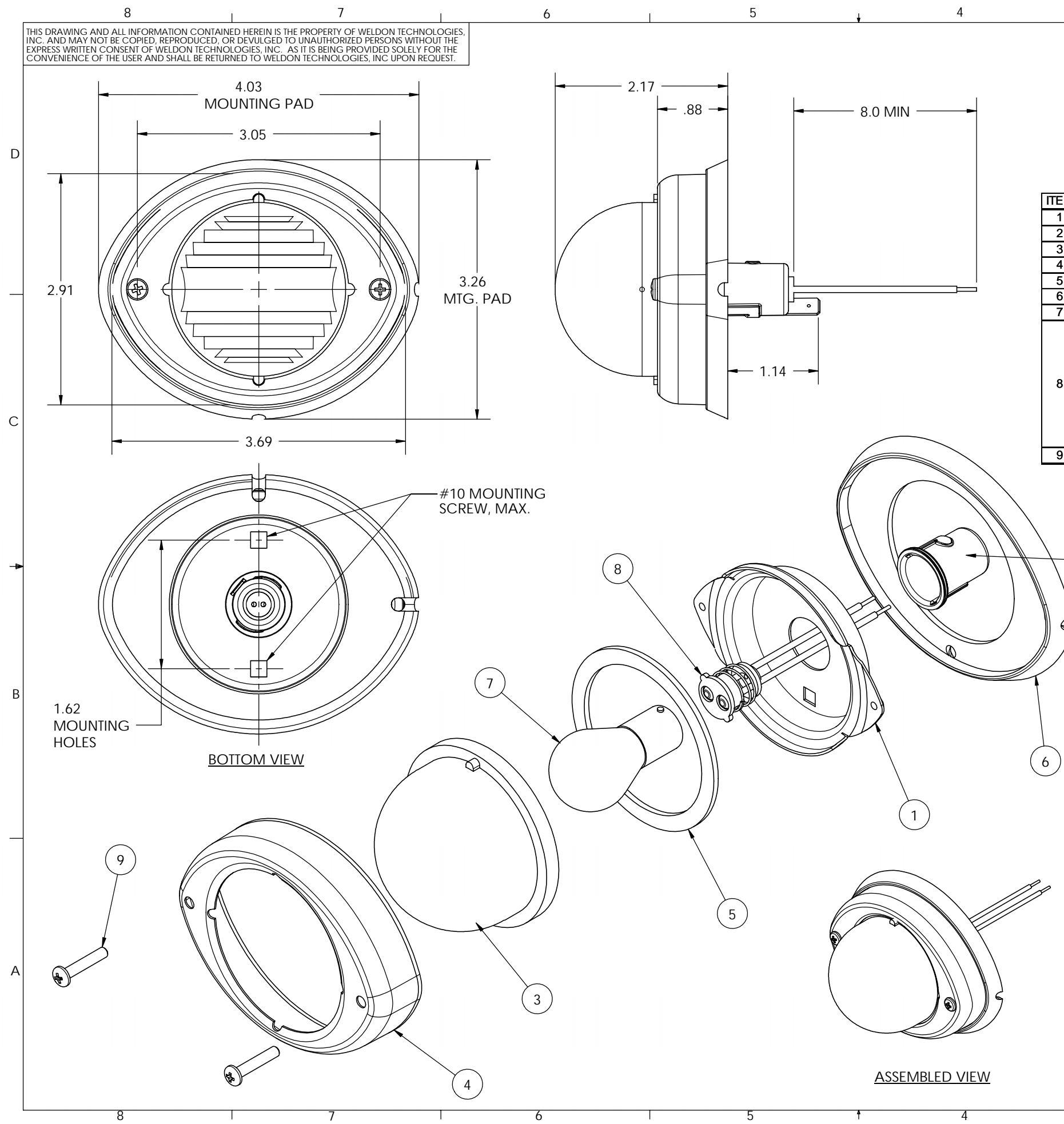


THIS DRAWING AND ALL INFORMATION CONTAINED HEREIN IS THE PROPERTY OF WELDON TECHNOLOGIES, INC. AND MAY NOT BE COPIED, REPRODUCED, OR DEVLGED TO UNAUTHORIZED PERSONS WITHOUT THE EXPRESS WRITTEN CONSENT OF WELDON TECHNOLOGIES, INC. AS IT IS BEING PROVIDED SOLELY FOR THE CONVENIENCE OF THE USER AND SHALL BE RETURNED TO WELDON TECHNOLOGIES, INC UPON REQUEST.

REVISIONS				
REV.	ECN	DESCRIPTION	DATE	BY APVD
A	R0459	PRODUCT RELEASE	10/3/03	TS ST
		MARKER-FUNCTION LEAD WIRE COLOR CHANGED FROM BLACK TO BROWN; UPDATED PACKING INFO; ADDED NOTES.	10/31/03	TS ST



ITEM	DESCRIPTION	Service P/N	MATERIAL	QTY.
1	HOUSING	n/a	STAINLESS STEEL	1
2	SOCKET	n/a	STEEL, ZINC PLATED W/YELLOW CHROMATE	1
3	LENS	0C11-1181-00	POLYCARBONATE, AMBER - SIDE TURN SIGNAL OPTICS	1
4	BEZEL	0B50-1179-00	STAINLESS STEEL, POLISHED	1
5	LENS GASKET	0D10-1176-00	SILICON RUBBER, WHITE	1
6	MOUNTING PAD	0D30-1092-00	PLASTICIZED (FLEXIBLE) PVC, BLACK	1
7	BULB - 32/3 CP	1157	LAMP #1157, DUAL CONTACT/DUAL FILAMENT	1
8	PIGTAIL	n/a	DUAL WIRE PIGTAIL WIRE - 18 GAGE GPT RED WIRE = MAJOR (32 CP) BROWN WIRE = MINOR (3 CP) TERMINAL - BUTTON CONTACT, BRASS SPRING - STEEL, ZINC PLATE W/ CLEAR CHROMATE INSULATOR - NYLON 6, BLACK WIRE SEAL - SBR RUBBER, BLACK (OPTIONAL)	1
9	LENS SCREW	0F15-1177-00	STAINLESS STEEL, PASSIVATED	2

- NOTES:
1. SOCKET AND TAB TO BE PLATED AFTER WELDING. TAB MUST MATE WITH STANDARD .250" FAST-ON TYPE QUICK CONNTECTS.
 2. ASSEMBLE ITEMS 1 THROUGH 8 AS SHOWN.
 3. BEZEL MOUNTING SCREWS ARE TO BE INSTALLED SUCH THAT THEY REMAIN IN PLACE DURING SHIPPING. THE SCREWS MUST NOT BE OVER-TORQUED.
 4. PERFORM ELECTRICAL TEST ON LAMP TO INSURE PROPER OPERATION OF EACH FUNCTION OF THE LAMP ASSEMBLY. INDEPENDENTLY TEST BOTH FILAMENTS AT 12-14VDC.
 5. PLACE THE LAMP ASSEMBLY INTO A POLYBAG. PACK 144 LAMPS INTO A CARTON USING FLATBOARDS AND DIVIDERS.
 6. SHIPPING CARTON SHALL BE UNPRINTED CORRIGATED CARDBOARD. A WELDON IMPORT SHIPPING LABEL (PER WELDON DRAWING 0Q40-1417-00) SHALL BE APPLIED TO TWO ADJACENT CORNERS OF THE MASTER CARTON.

UNLESS OTHERWISE SPECIFIED DIMENSIONS ARE IN INCHES TOLERANCES ARE: X.XXX - ±0.005 X.XX - ±0.020 X.X - ±0.050 ANGLES - ±0.5°	CAD GENERATED DRAWING, DO NOT MANUALLY UPDATE		WELDON TECHNOLOGIES, INC.	
	APPROVALS	DATE		
MATERIAL	DRAWN	TS	9/15/03	SIDE-MARKER/TURN SIGNAL W/ .250 GROUNDING TAB AND STAINLESS STEEL BASE
FINISH	CHECKED	ST	9/24/03	
DO NOT SCALE DRAWING	PROJ. NO.	00144	SCALE: NONE	SIZE B PART NO. 9186-8560-29 REV. A
				WELDON COMPUTER GRAPHICS SHEET 1 OF 1