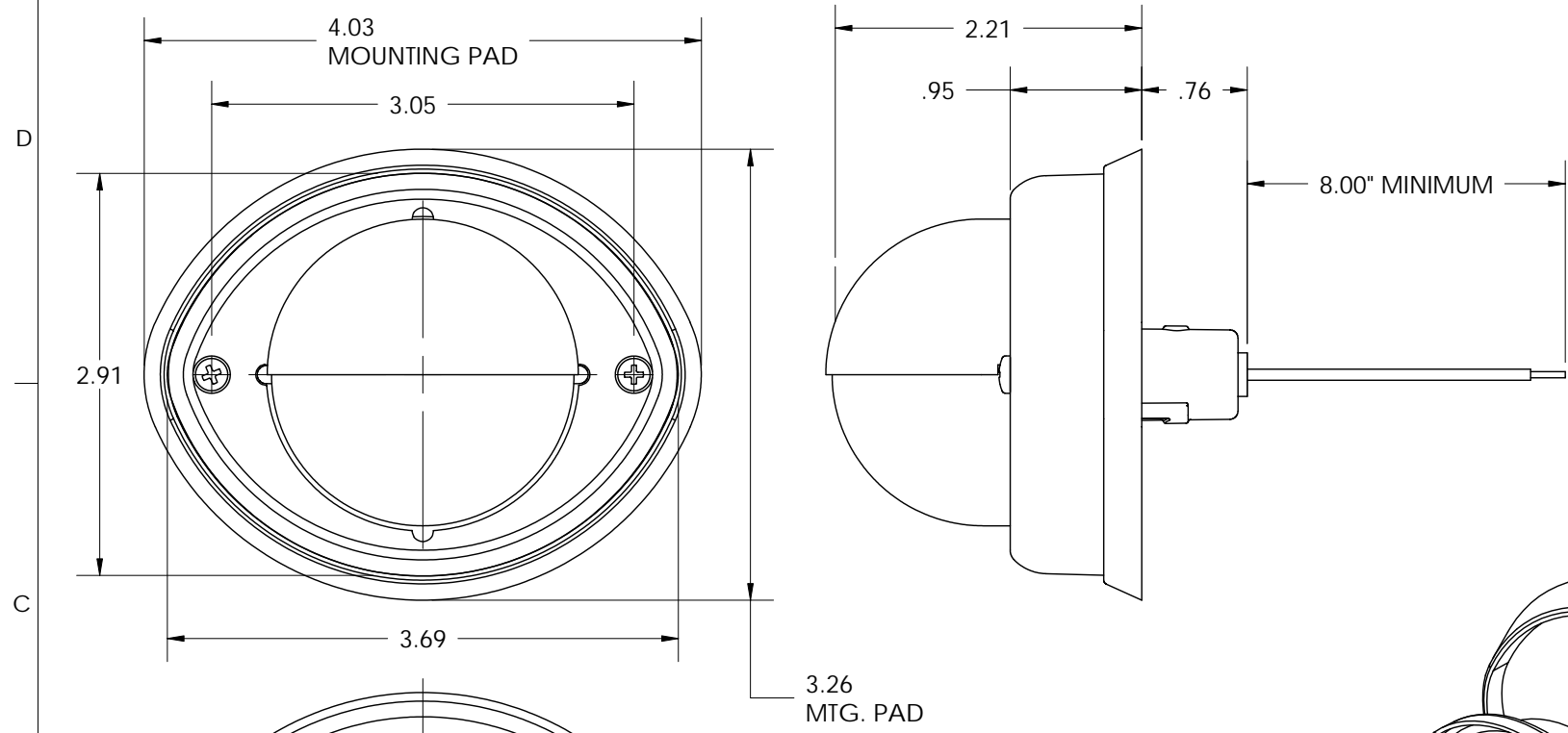
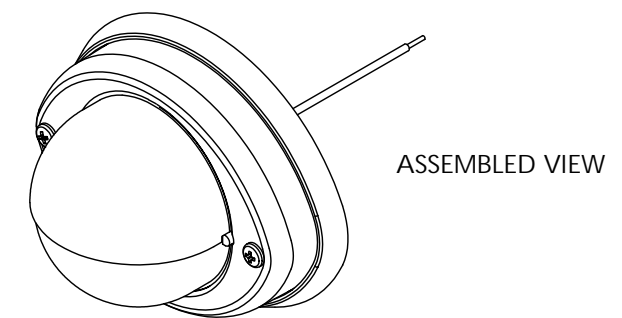
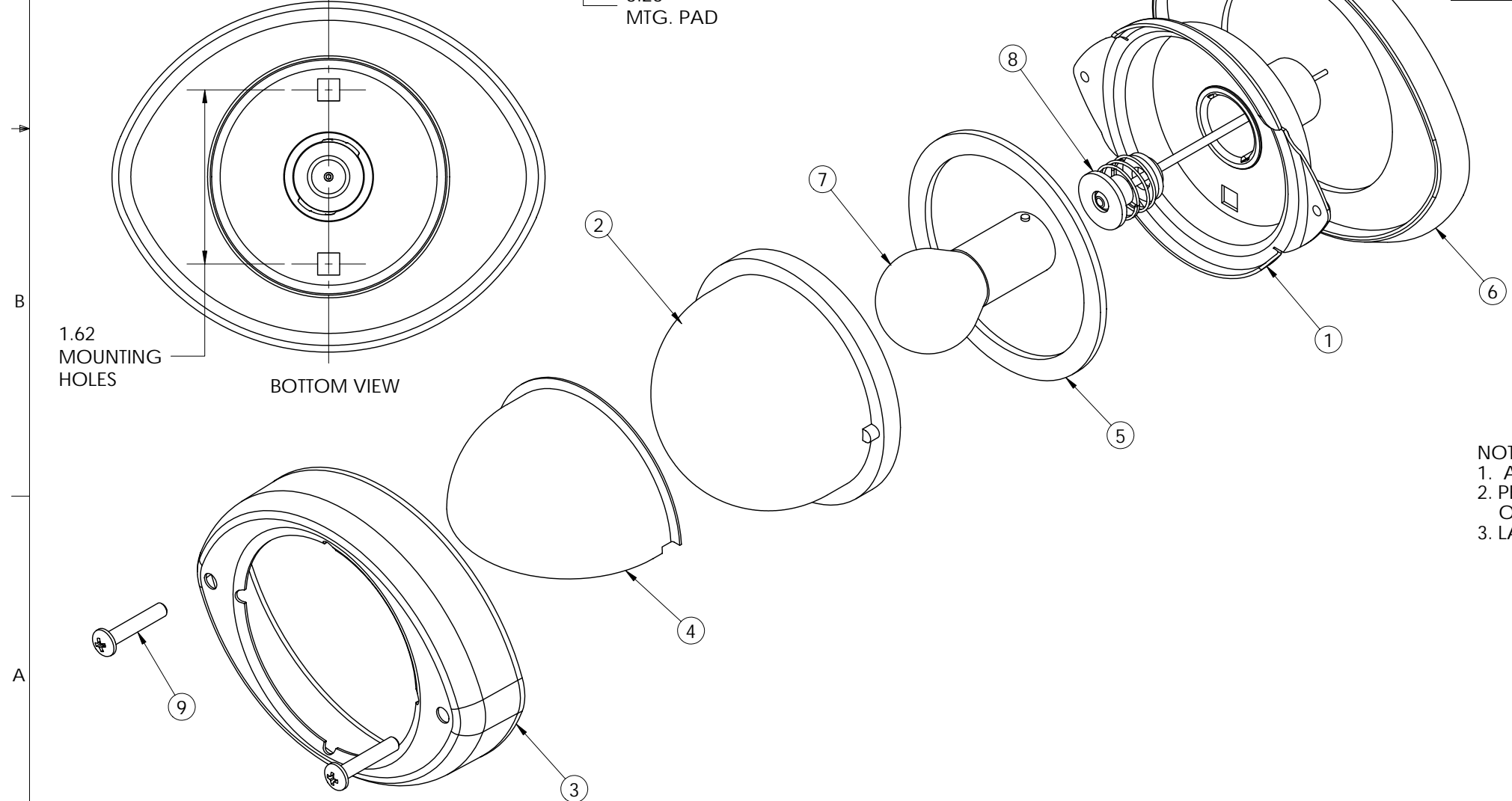


THIS DRAWING AND ALL INFORMATION CONTAINED HEREIN IS THE PROPERTY OF WELDON TECHNOLOGIES, INC. AND MAY NOT BE COPIED, REPRODUCED, OR DEVLGUTED TO UNAUTHORIZED PERSONS WITHOUT THE EXPRESS WRITTEN CONSENT OF WELDON TECHNOLOGIES, INC. AS IT IS BEING PROVIDED SOLELY FOR THE CONVENIENCE OF THE USER AND SHALL BE RETURNED TO WELDON TECHNOLOGIES, INC UPON REQUEST.

REVISIONS					
REV.	ECN	DESCRIPTION	DATE	BY	APVD
A	R0116	RELEASE FOR PRODUCTION	5/22/00	TB	ST
B	0141	MOUNTING PAD WAS EPDM FOAM GASKET	7/11/00	TB	
C	0181	LENS WAS POLYCARBONATE; LENS GASKET WAS EPDM; ADDED SERVICE P/N'S	11/28/00	ST	



ITEM	DESCRIPTION	Service P/N	MATERIAL	QTY.	QTY.	QTY.
1	HOUSING	n/a	STEEL, ZINC PLATED W/ CLEAR CHROMATE	1	1	1
2	LENS	0C63-1180-00	GLASS, CLEAR - NO OPTIC	1	1	1
3	BEZEL	0B50-1179-00	STAINLESS STEEL, POLISHED	1	1	1
4	SHIELD	0C20-1178-00	STAINLESS STEEL, POLISHED	1	1	1
5	LENS GASKET	0D10-1176-00	SILICON RUBBER, WHITE	1	1	1
6	MOUNTING PAD	0D30-1092-00	PLASTICIZED (FLEXIBLE) PVC, BLACK	1	1	1
7	BULB - 32 CP	1156	LAMP #1156, SINGLE CONTACT/SINGLE FILAMENT	1	--	--
7	BULB - 21 CP	1141	LAMP #1141, SINGLE CONTACT/SINGLE FILAMENT	--	1	--
7	BULB - 50 CP	1195	LAMP #1195, SINGLE CONTACT/SINGLE FILAMENT	--	--	1
8	PIGTAIL	n/a	SINGLE WIRE PIGTAIL WIRE - 18 GAGE GPT, BLACK TERMINAL - BUTTON CONTACT, BRASS SPRING - STEEL, ZINC PLATE W/ CLEAR CHROMATE INSULATOR - NYLON 6, BLACK WIRE SEAL - SBR RUBBER, BLACK	1	1	1
9	LENS SCREW	0F15-1177-00	STAINLESS STEEL, PASSIVATED	2	2	2



NOTES:  
 1. ASSEMBLE ITEMS 1 THROUGH 9 AS SHOWN.  
 2. PERFORM ELECTRICAL TEST ON LAMP TO INSURE PROPER OPERATION OF THE LAMP ASSEMBLY.  
 3. LAMP ASSEMBLY TO CONFORM TO WELDON PERFORMANCE SPECIFICATIONS.

UNLESS OTHERWISE SPECIFIED DIMENSIONS ARE IN INCHES TOLERANCES ARE: X.XXX - ±0.005 X.XX - ±0.020 X.X - ±0.050 ANGLES - ±0.5°		CAD GENERATED DRAWING, DO NOT MANUALLY UPDATE		WELDON TECHNOLOGIES, INC.	
MATERIAL		APPROVALS	DATE		
FINISH		DRAWN	5/5/00	STEPWELL LAMP ASSEMBLY	
DO NOT SCALE DRAWING		CHECKED	5/26/00		
PROJ. NO.		QUAL ENG		SIZE B PART NO. 9186-8562-30 REV C	
		MFG ENG	00144	SCALE: NONE WELDON COMPUTER GRAPHICS SHEET 1 OF 1	